



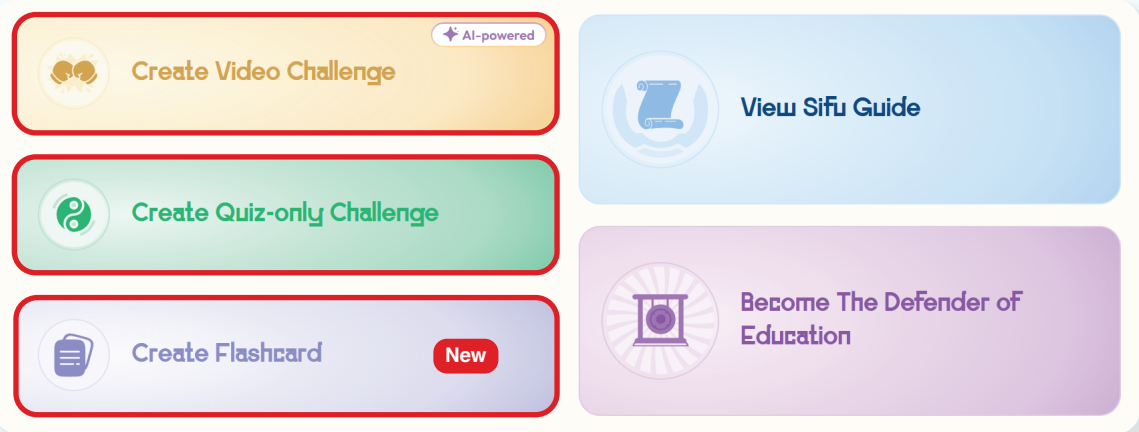
A GUIDE TO USING KUNG FU QUIZ FOR YOUR CLASSROOM!

Kung Fu Quiz is the ultimate **online quiz platform** designed for **educators** to make classroom more engaging, enhance learning, and gamify lessons for students.

To get started, follow this quick guide and get ready to level up your teaching!

1. Select your Challenge Mode

Choose from 3 different Challenge Modes to make your lessons fun and effective, whether through **AI-powered YouTube Video Quizzes**, **Custom Quizzes**, or **Quick Revision Flashcards**.



a. **Create Video Challenge:** Simply copy and paste any YouTube video link to turn the YouTube video into a Video Quiz.

Create New Challenge

Challenges Mode: **Video Challenge**

YouTube Video URL: https://www.youtube.com/watch?v=B_U33FLPUeQ

Challenge Title: Physics: Vectors and Scalars

Subject: Science Grade: IGCSE

Description: Quantities with Magnitude and Direction

Thumbnail (Optional): IGCSE Physics Vectors and Scalars

Character Limit: 39/250

Preview: **Vectors and Scalar**
What does a vector quantity have?
 magnitude but no direction
 direction
 magnitude
 both magnitude and direction

b. **Create Quiz-only Challenge:** Create fun and interactive quizzes that support audio-visual elements to make quizzes exciting.

Create New Challenge

Challenges Mode: **Quiz-only Challenge**

Challenge Title: chemistry Test

Subject: Science Grade: IGCSE

Description: Periodic table and elements.

Thumbnail (Optional):

Character Limit: 28/250

Preview: **Choose the best answer**

2	1	2											3	4	5	6	7	8	9	10				
3	Li	Be																	B	C	N	O	F	Ne
4	Na	Mg																	Al	Si	P	S	Cl	Ar
5	K	Ca	Sc	Ti	V	Cr	Mn	Fe	Co	Ni	Cu	Zn	Ga	Ge	As	Se	Br	Kr						
6	Rb	Sr	Y	Zr	Nb	Mo	Tc	Ru	Rh	Pd	Au	Hg	Tl	Pb	Bi	Po	At	Rn						
7	Cs	Ba	La	Hf	Ta	W	Re	Os	Ir	Pt	Au	Hg	Tl	Pb	Bi	Po	At	Rn						
8	Fr	Ra	Ac	Th	Pa	U	Np	Pu	Am	Cm	Bk	Cf	Es	Fm	Md	No	Lr	118						

How many elements are on the periodic table?

200

118

1 of 1 challenges

Close

Create Challenge

- c. **Create Flashcard:** Create and use Flashcards to make **revisions** or **warm-up activities** engaging and effective.

Create New Challenge

Challenges Mode: Flashcard

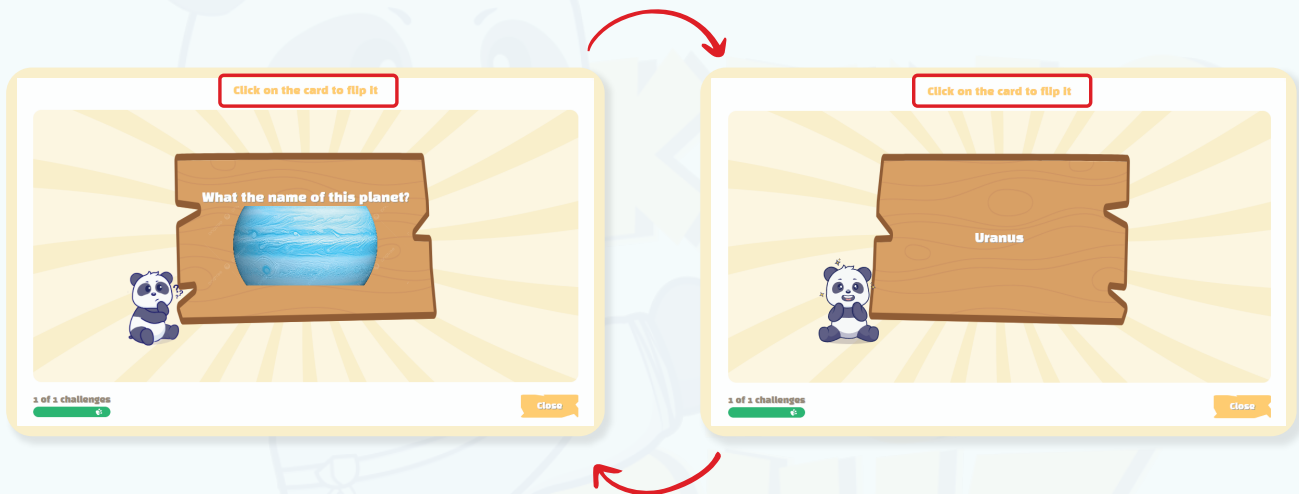
Challenge Title: Planets

Subject: Science | Grade: Second...

Description: Description (Optional)

Thumbnail (Optional): systeme-solaire-illustration.jpg

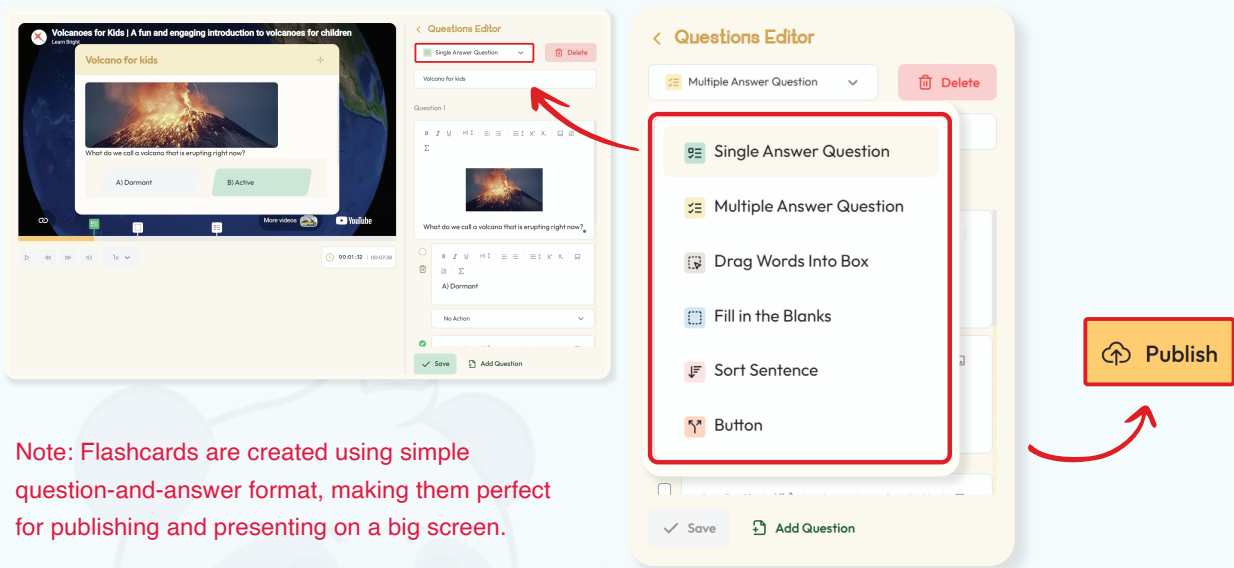
Buttons: Cancel, Create Challenge



2. Add your Questions and Publish

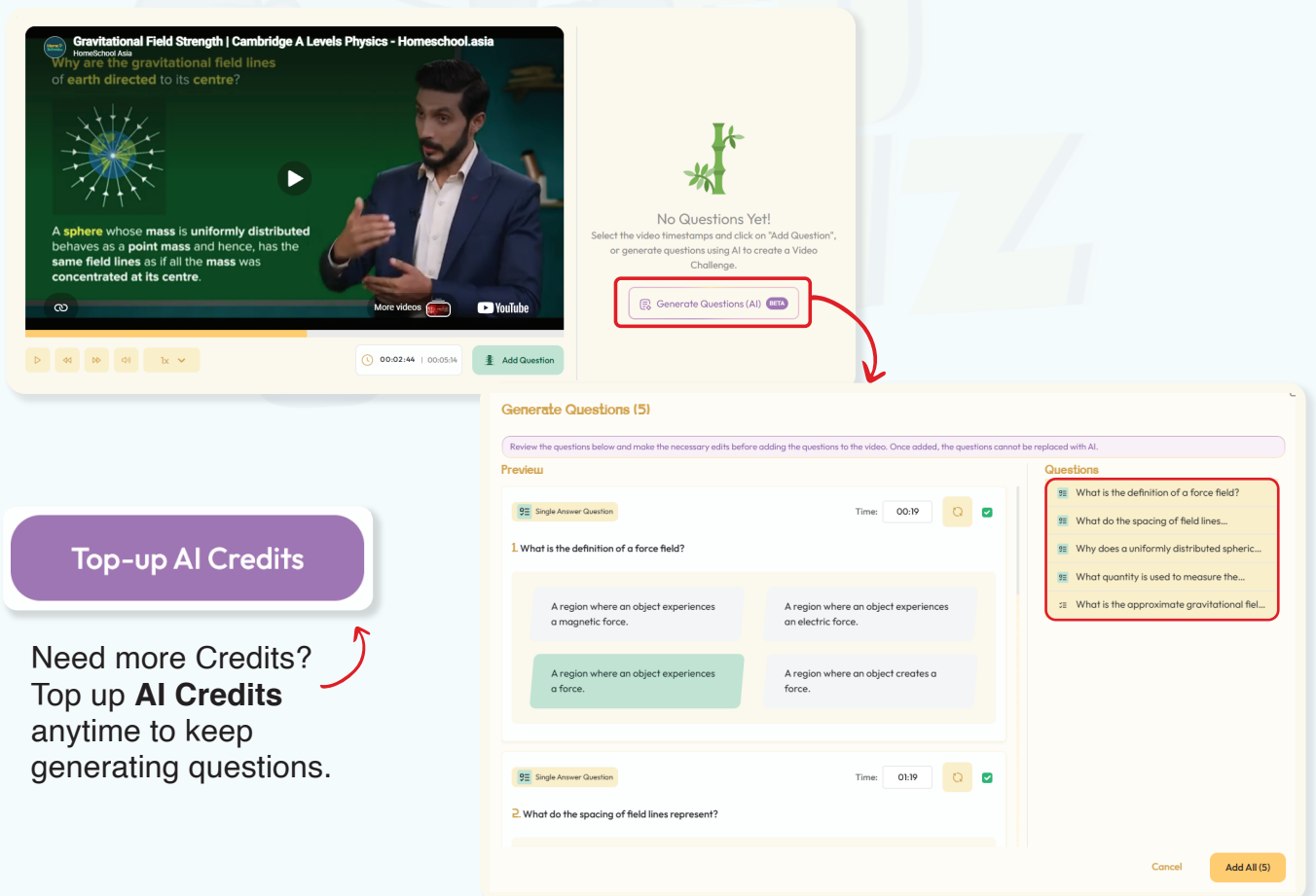
Create your Own: Add your own questions to create quizzes tailored to your lesson plan. Choose from **6 different Question Types**, from multiple-choice questions and fill in the blanks to sort sentences, and **Publish your Challenge**.

You can also add **audio-visual elements like images and audio** to make your quiz questions more interactive, memorable, and effective.



Note: Flashcards are created using simple question-and-answer format, making them perfect for publishing and presenting on a big screen.

Create with sensAI: sensAI automatically generates questions from YouTube videos and embeds them directly into the video, saving hours of manual work. Use **AI Credits** to generate questions for **Video Challenges**.



Top-up AI Credits

Need more Credits?
Top up **AI Credits**
anytime to keep
generating questions.

3. Choose your Dojo Mode

Choose a Dojo Mode that suits your **teaching objective** and the experience you want your students to have.

- Game Mode for gamified learning.
- Assessment Mode for student evaluation.
- Feedback Mode for immediate feedback.
- Live Mode for hosting live quizzes.

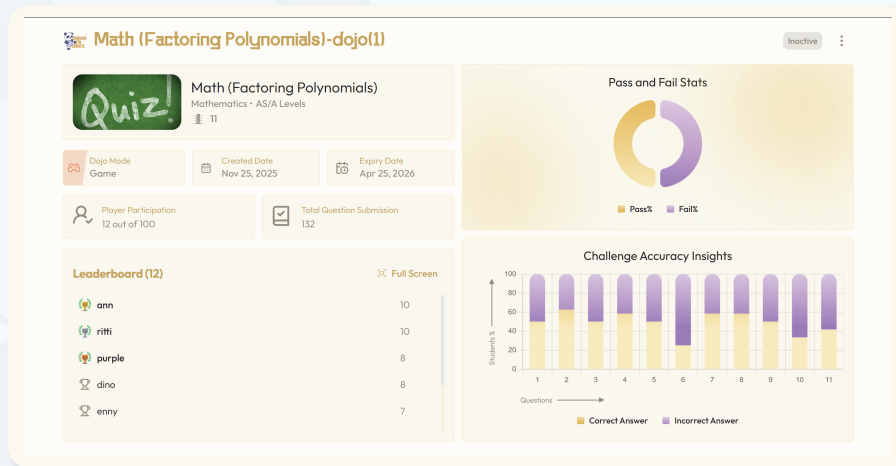
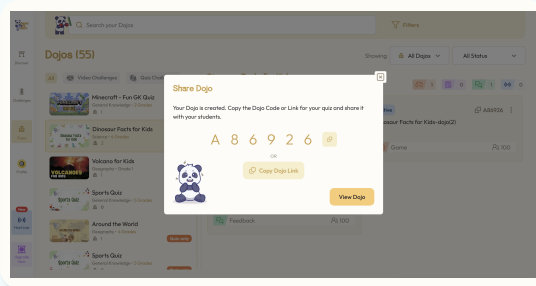
The screenshot shows a user interface for selecting a Dojo Mode. On the left, there are two tabs: 'Challenges' and 'Dojos (1)'. The 'Dojos (1)' tab is highlighted with a red box, and a red arrow points from it to the main content area. The main content area is titled 'Dojo Mode' and contains four options, each with an icon and a description:

- Game** (Game controller icon): Students get quiz scores and leaderboards for a fun, competitive game experience.
- Assessment** (Document icon): Quiz insights are available only to the sifus to assess the student's understanding.
- Feedback** (Speech bubble icon): Students receive an immediate feedback after an incorrect answer choice to help them learn better.
- Live** (Speaker icon): Present the live quiz on a big screen, while students answer from their devices.

On the right side of the interface, there is a red box containing the text 'Create and Share Dojo'. A red arrow points from this box to the right edge of the main content area.

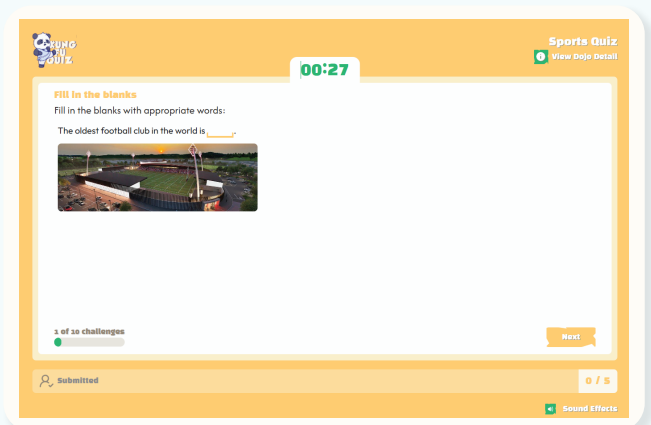
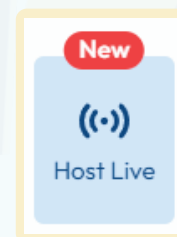
4. Share and Track Progress

Share the **Dojo Link/Code** with your students & invite them to play the quiz. Watch your students level up their learning with **real-time insights into student performance**.



Host a Live Quiz!!

Present on a big screen, invite students to join by **scanning the QR code or using the Dojo Link/Code**, control the flow of questions, and spark friendly competition with **Live Leaderboards** after every question.



READY TO ELEVATE YOUR TEACHING?

Create your first Kung Fu Quiz and turn lessons into exciting classroom experiences.



[Get started](#)

Need help or want to learn more? Contact us:

sensei@kungfuquiz.com | marketing@kungfuquiz.com

Connect with us:



www.kungfuquiz.com